

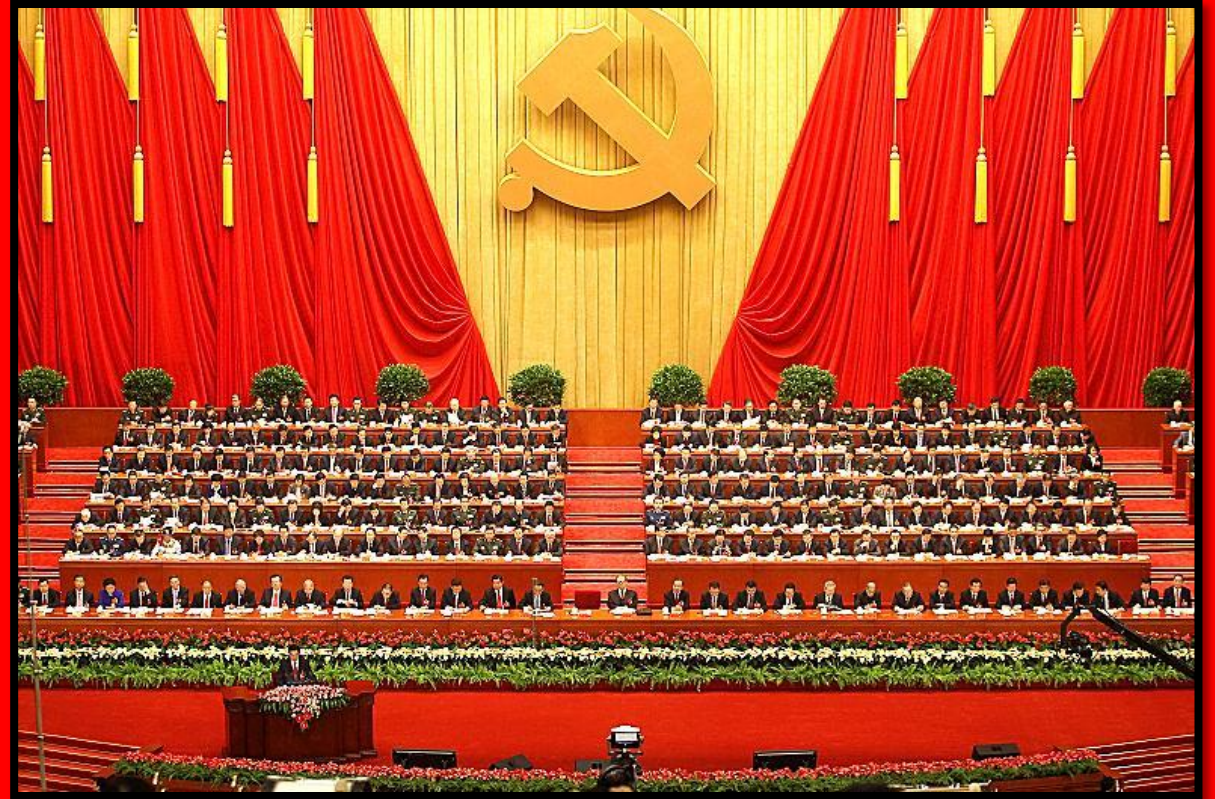
**Chinese Government**

# Just the Facts

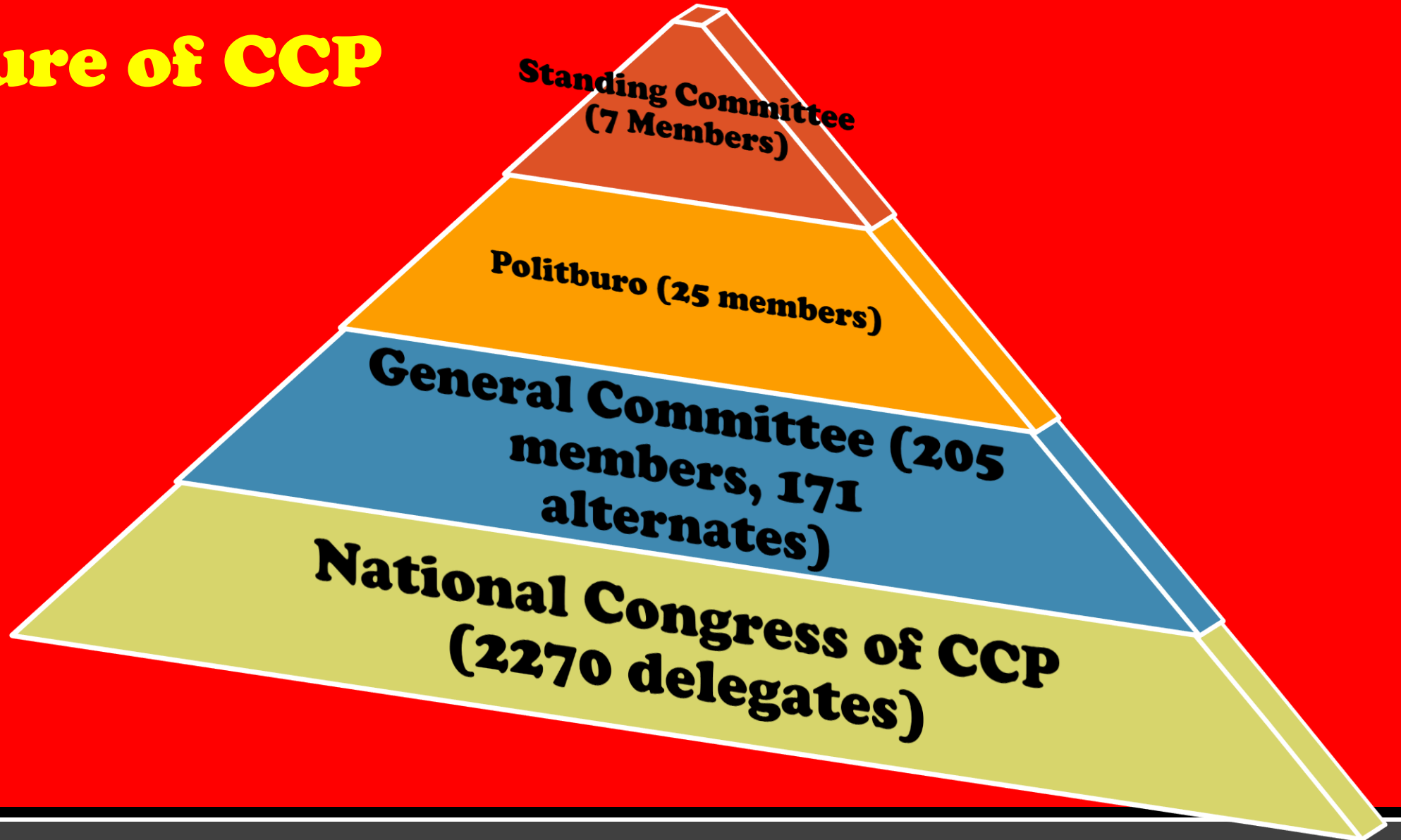
<b>Topic</b>	<b>China</b>
<b>Geographical Distribution of Power</b>	<b><u>Unitary</u> State</b>
<b>Relationship between Legislature and Executive</b>	<b><u>Parliamentary</u></b>
<b>Executive</b>	<b>President, chosen by the Congress every 5 years</b>
<b>Executive Election System</b>	<b>Unelected</b>
<b>Legislature</b>	<b><u>Unicameral</u>, People's National Congress</b>
<b>Legislative Election System</b>	<b>Unelected, chosen from lower regional congresses</b>
<b>Party System</b>	<b>One Party System, Chinese Communist Party</b>
<b>Judiciary</b>	<b>Supreme People's Court</b>

## Political Parties

- **Chinese Communist Party (CCP)**
- **It is the only political party in China, however only 6% of the Chinese belong to the party**
- **Application is difficult**
- **Reasons to join are mostly out of nationalism or more practical resume building**



# Structure of CCP



## **Structure of the CCP**

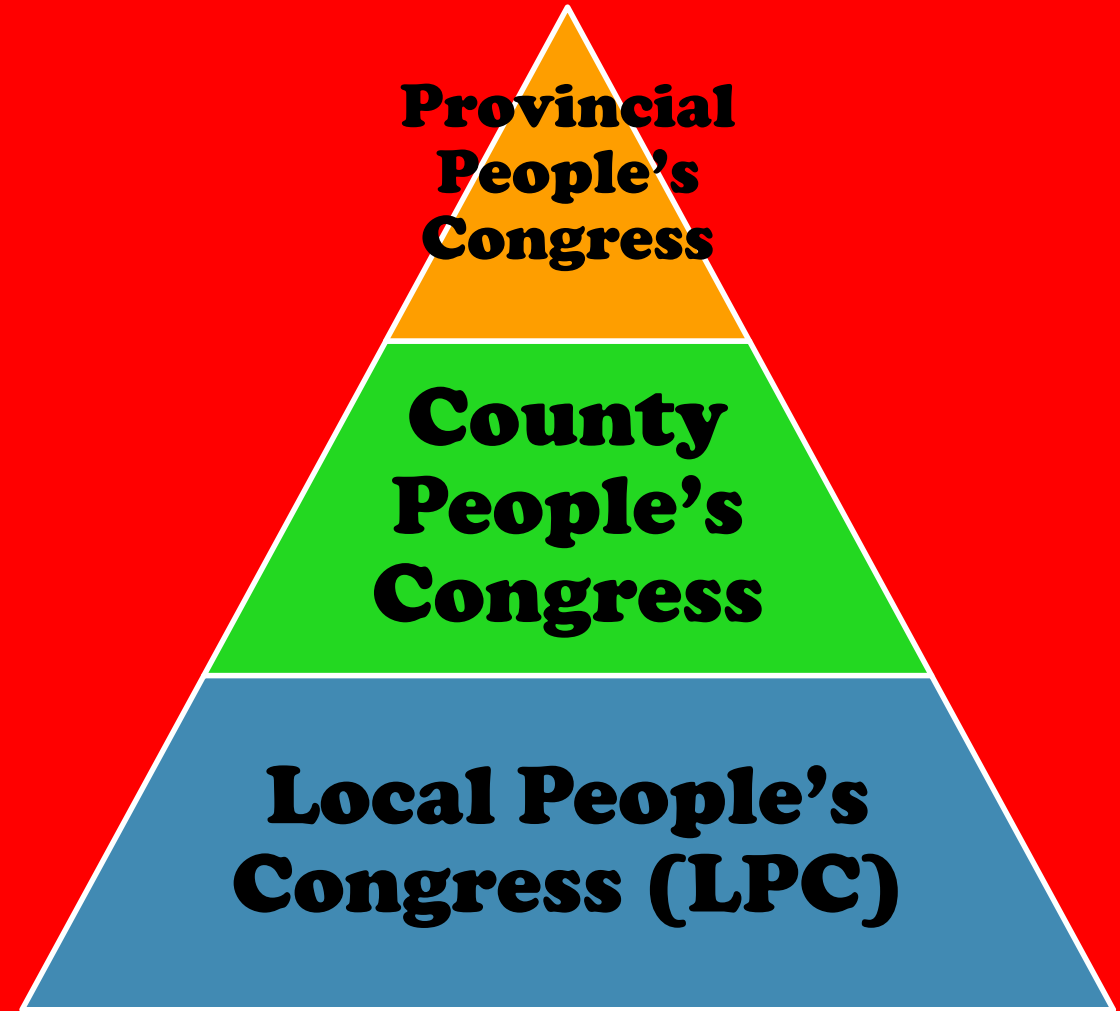
- **Promotion in the CCP happens through nomenklatura. The higher levels of leadership call up lower level members**
- **Lower level leaders do not dispute policy and legislation of the upper levels**
- **The standing committee is the most powerful part of the CCP**
- **The general secretary is chosen by this group**

# Standing Committees of CCP

Pos	15 <sup>th</sup> Party (1997)	16 <sup>th</sup> Party (2002)	17 <sup>th</sup> Party (2007)	18 <sup>th</sup> Party (2012-
1	Jiang Zemin	Hu Jintao	Hu Jintao	Xi Jinping
2	Li Peng	Wu Bangguo	Wu Bangguo	Li Keqiang (Premier)
3	Zhu Rohgji	Wen Jiabao	Wen Jiabao	Ziang Dejiang
4	Li Ruihuan	Jai Qinglin	Jia Qinglin	Yu Zhengsheng
5	<u>Hu Jintao</u>	Li Changchun	Li Changchun	Liu Yunshan
6	Wei Jianxing	Huang Ju	<u>Xi Jinping</u>	Wang Qishan
7	Li Lanqing	Wu Guanzhen	Li Keqiang	Zhang Gaoli

# Elections

- **Members of the CCP are given one choice to vote for**
- **Local elections are the closest to being competitive**
- **The CCP screens/approves/rejects candidates for elections**



## **Executive Office of the CCP**

- **Serves a five year term with the option of another term**
- **President holds three positions at the same time**
- **1. President (ceremonial head of state)**
- **2. General Secretary (Most powerful political leader)**
- **3. Chairman of Military Commission (Commander-in-Chief)**



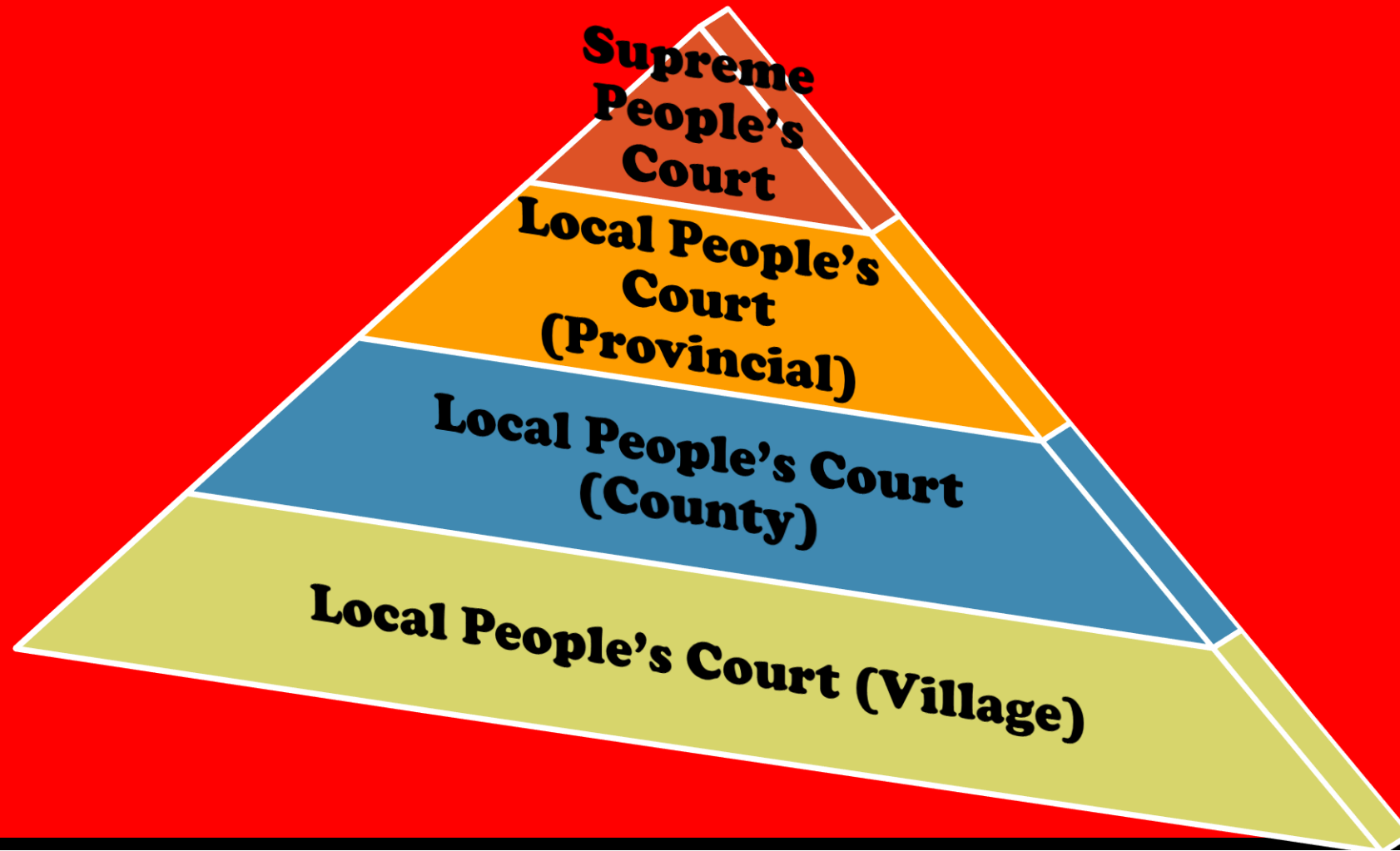
## **The Premier**

- **Appointed by president**
- **Head of government**
- **5 year term, approved by National People's Congress**
- **Premier oversees the State Council (35 ministers and governors)**

# Judiciary



# Levels of Judiciary



# Chinese Court System

- **More than 99% of criminal charges result in a conviction or guilty plea by suspect**
- **Within Chinese law the burden of proof is on the accused not the state**
- **Judges will issue sentences longer than the law states**

